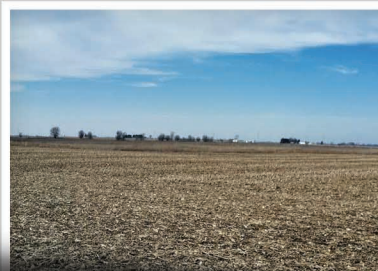
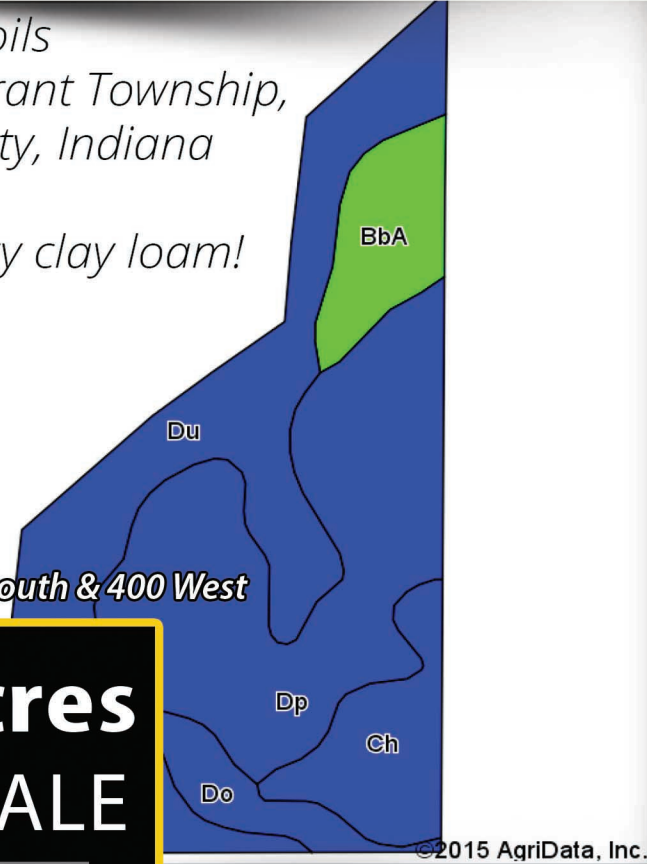


*Productive Soils  
Located in Grant Township,  
Benton County, Indiana*

*Drummer silty clay loam!*



**40 Acres  
FOR SALE**  
All Tillable  
Drummer Silty Clay Loam

## PRODUCTIVE SOILS FARM

GRANT TOWNSHIP, BENTON COUNTY, SW BOSWELL

Surety Weighted Avg. 164.6  
Near US-41, SouthWest of Boswell  
±5 Acre CRP Filter Strip

**\$405,000**

### SOILS

Surety Weighted Avg. 164.6  
Predominant soil is Drummer Silty  
Clay Loam

### ADDRESS

800 South & 400 West, Boswell  
PT E1/2 SE1/4 26-24-09  
Parcel # 04-14-26-400-006.001-006

Call Johnny Klemme 765-427-1619

[www.PrairieFarmland.com](http://www.PrairieFarmland.com)

Information deemed reliable but not guaranteed. Subject to change without notice.

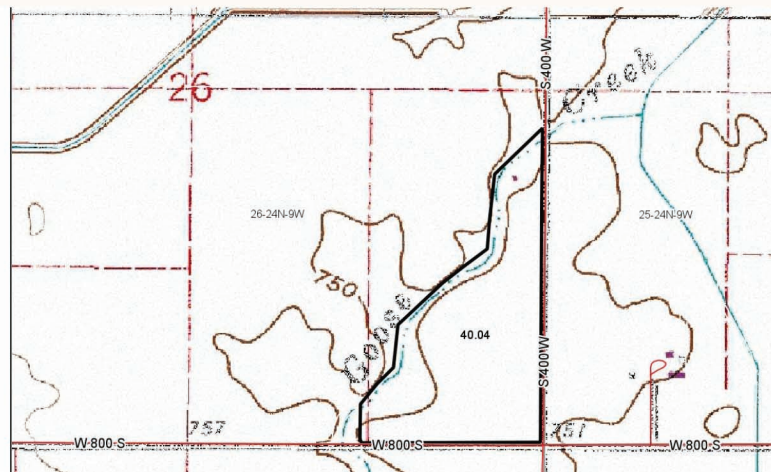


Area Symbol: IN007, Soil Area Version: 17

Code	Soil Description	Acres	Percent of field	Non-Irr Class Legend	Non-Irr Class	Corn	Grass legume hay	Pasture	Soybeans	Winter wheat	Oats	Grass legume pasture
Du	Drummer silty clay loam, 0 to 2 percent slopes	15.01	37.5%		Ilw	171	5		56	64	88	8
Dp	Darroch silt loam, till substratum	13.73	34.3%		Ilw	160	5	11	49	72		
Ch	Chalmers silty clay loam	3.65	9.1%		Ilw	190	6	13	54	76		
BbA	Barce silt loam, 0 to 2 percent slopes	3.18	7.9%		I	148	5	10	49	67		
FoB2	Foresman silt loam, 1 to 5 percent slopes, eroded	2.57	6.4%		Ile	141	5	9	46	64		
Do	Darroch silt loam	1.90	4.7%		Ilw	158	5	11	49	71		
<b>Weighted Average</b>						<b>164.6</b>	<b>5.1</b>	<b>6.9</b>	<b>51.9</b>	<b>68.4</b>	<b>33</b>	<b>3</b>

## 40 Acres FOR SALE

All Tillable  
Drummer Silty Clay Loam



Call Johnny Klemme 765-427-1619

[www.PrairieFarmland.com](http://www.PrairieFarmland.com)

Information deemed reliable but not guaranteed. Subject to change without notice.

